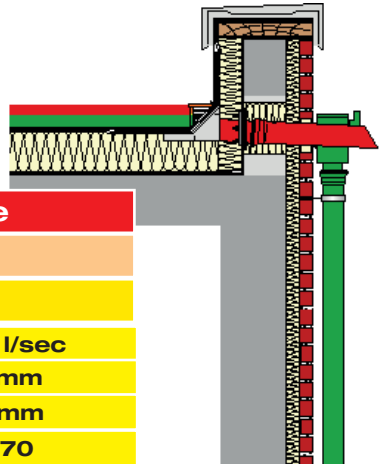


Specification sheet LX 1156

Parapet drainage

Series 43 LORO-X DUOFLUX®

Double pipe - with basin -



Main drainage		Emergency drainage	
Gravity flow		Gravity flow	
Silent		Silent	
Discharge rate:	2,2 l/sec	Discharge rate:	3,4 l/sec
Water height:	35 mm	Water height:	75 mm
Roof penetration:	52 mm	Roof penetration:	52 mm
Diameter:	DN 70	Diameter:	DN 70
Weir height:	0 mm	Weir height:	40 mm
Drain:	ventilated	Drain:	ventilated
Downpipe:	ventilated	Downpipe:	Spout
Downpipe height:	4,2 m	Downpipe height:	0 m
Drainage:	in sewer	Drainage:	on floor
Flange form:	Bonding flange	Flange form:	Bonding flange

LX 1156 Piece list

1 x Art.-No. choose drain on page two!

2 x Art.-No 01301.070X, LORO-X Pipe with one socket

1 x Art.-No 04380.070X, LORO-Collector

1 x Art.-No 13228.070X, LORO-X Sliding flange

2 x Art.-No 00806.070X, LORO-X Anchor clips

1 x Art.-No 01001.070X, LORO-X Pipe with one socket

1 x Art.-No 15199.070X, LORO-X Spout

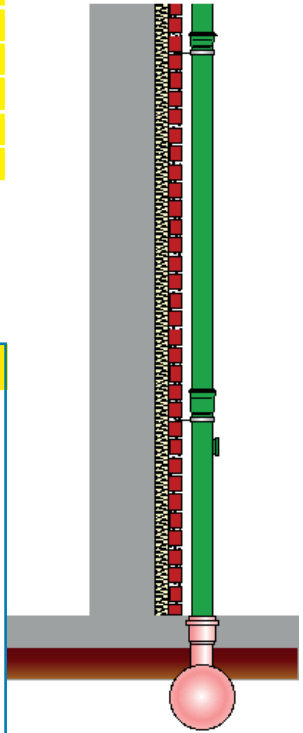
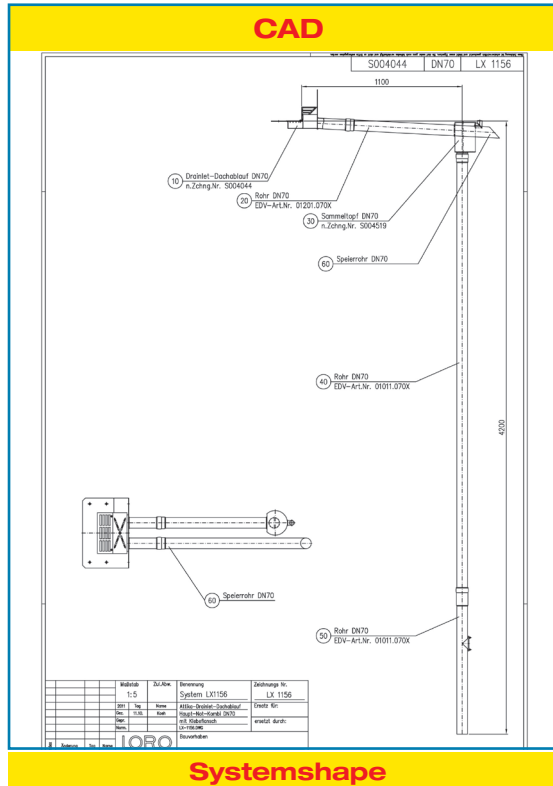
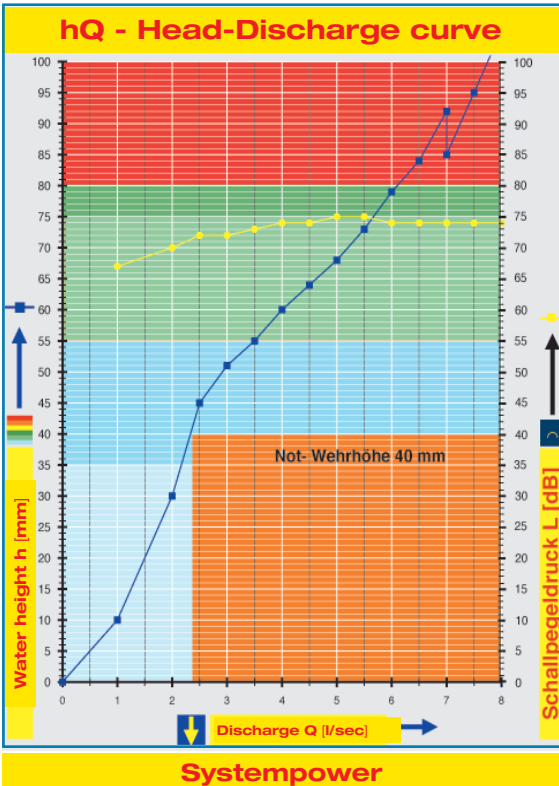
1 x Art.-No 05510.070X, LORO-X Standpipe

6 x Art.-No 00911.070X, LORO-X Sealing elements

3 x Art.-No 00973.070X, LORO-X Pipe clamps

3 x Art.-No 09603.200X, LORO-X Threaded rods

1 x Art.-No 00986.000X, LORO-X Lubricant



Water height	mm	5	10	15	20	25	30	35	40	45	50	55	60	65	70	75
Discharge	l/sec			1,2	1,5	1,7	2	2,2	2,3	2,5	2,9	3,5	4	4,7	5,2	5,6
Silent																

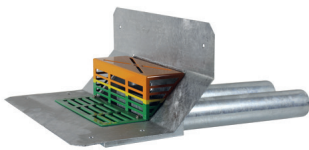
LORO-X DUOFLUX Parapet double pipe with basin

LX1156-3X

Drain Art.-No. 13207.070X
Weight: 8,2 kg

Weir in flow direction right

with bonding flange
for bituminous roofing sheets

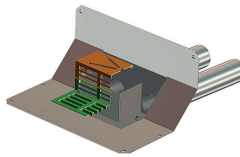


LX1156-3X

Drain Art.-No. 13307.070X
Weight 8,3 kg

Weir in flow direction left

with bonding flange
for bituminous roofing sheets



LX1156-1X

Weir in flow direction right
Art.-No. 01327.070X
Weight 12,1 kg
Weir in flow direction left
Art.-No. 01328.070X
Weight 12,1 kg

with clamping flange
for plastic roofing sheets



LORO-X Pipe with one socket
made of hot-dip
galvanised steel, DN 70

500 mm long Art.-No 01301.070X
3000 mm long Art.-No 01001.070X



LORO-X Spout
made of hot-dip
galvanised steel, DN 70
Art.-No 15199.070X



LORO-X Anchor clips
made of hot-dip
galvanised steel, DN 70
Art.-No 00806.070X
Weight: 0,5 kg



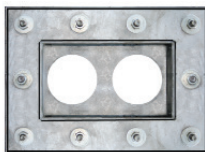
LORO-X Sealing elements
Art.-No 00911.070X



LORO-X Collector
made of hot-dip
galvanised steel, DN 70
Art.-No 04380.070X
Weight: 2,6 kg



LORO-X Sliding flange
for attaching the vapor barrier,
fixed and loose flange construction,
made of galvanized steel,
including sealing elements
Art.-No 13228.070X
Weight: 5,1 kg



LORO-X Sliding flange
for double pipe and on-site
bendable bonding flange
Art.-No. 13073.070X
Weight: 1,7 kg



LORO-X Pipe clamps
Art.-No 00973.070X
LORO-X Threaded rods
Art.-No 09603.200X

LORO-X Standpipe
with cleaning opening, made of
hot-dip galvanised steel, DN 70
Art.-No 05510.070X
Weight: 3,0 kg



Heat tracing: LOROWERK recommends to check all drains and pipes with regard to their frost-sensibility. Where necessary, these parts should be upgraded with heat tracing.